

CONCRETE SIDEWALK AND WALKWAY REMOVALS
SCALE 1:250

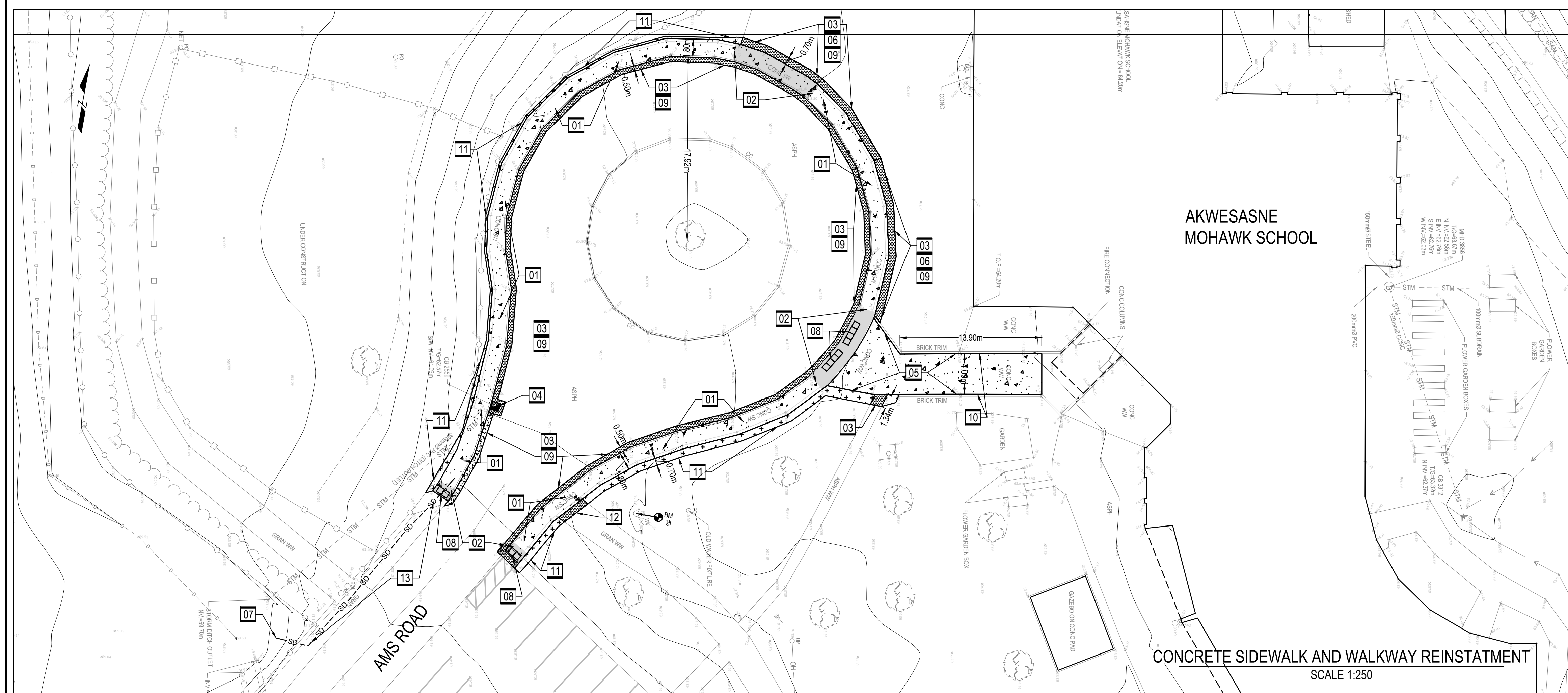
- REMOVAL NOTES**
- 01 LIMIT OF CONCRETE SIDEWALK REMOVAL.
 - 02 ASPHALT SAW-CUT 0.5M - 1.0M (VARIES) OFFSET CONCRETE SIDEWALK.
 - 03 LIMIT OF ASPHALT REMOVAL.
 - 04 PROTECT BRICK TRIM DURING CONCRETE WALKWAY REMOVAL. TO BE REINSTATED IF DISTURBED DURING CONCRETE SIDEWALK REMOVAL.
 - 05 CONTRACTOR TO PROTECT EXISTING PATHWAY DURING CONSTRUCTION.
 - 06 CONCRETE CURB AND SIDEWALK REMOVAL.
 - 07 CONCRETE WALKWAY REMOVAL.
 - 08 REMOVE AND ADJUST CATCHBASIN FRAME AND GRATE 50MM LOWER.
 - 09 PROTECT CHAINLINK FENCE DURING CONSTRUCTION.
 - 10 REMOVE 0.9M OF CONCRETE CURB.
 - 11 REMOVE 0.3M OF BRICK TRIM TO ALLOW NEW SIDEWALK WIDTH.

- REMOVALS LEGEND**
- ASPHALT REMOVAL ADJACENT TO CONCRETE REMOVAL
 - CONCRETE SIDEWALK OR CONCRETE CURB REMOVAL AND REPLACEMENT
 - CLEARING AND GRUBBING OF EXISTING
 - REMOVAL ITEM (FENCING, CURB, ETC.)
 - CATCHBASIN FRAME AND GRATE ADJUSTMENT

CONTROL POINT AND BENCHMARK SCHEDULE

LOCATION	POINT	DESCRIPTION	COORDINATES		ELEVATIONS
			NORTHING	EASTING	
PARKING LOT (DROP OFF) CIRCLE	CPM4	MAGNAN IN CONCRETE SIDEWALK	4963312.943	52041.378	61.955
LACROSSE RINK	CPM5	MAGNAN IN CONCRETE SLAB	4963415.961	52005.9	63.835
SOUTH EAST CORNER OF SITE	CPM6	SPRINK IN GRASS	4963271.725	52010.874	71.587
PARKING LOT (DROP OFF) CIRCLE	BM01	FIRE HYDRANT TOP OF SPINKLE	4963316.862	52003.868	63.96

UTM_ZONE 18_NAD 83 (EPSG: 31471)
DIMENSIONS SHOWN ARE GROUND DISTANCES



CONCRETE SIDEWALK AND WALKWAY REINSTATEMENT
SCALE 1:250

- REINSTATEMENT NOTES**
- 01 PROPOSED 1.8M WIDE MONOLITHIC SIDEWALK PER DETAIL SC2/C-2 C/W CONSTRUCTION JOINTS PER SC5/C-1.
 - 02 PROPOSED DEPRESSED SIDEWALK ENTRANCE.
 - 03 LIMIT OF 50MM HL3 ASPHALT RESTORATION.
 - 04 PROP. CATCHBASIN FRAME AND GRATE ADJUSTMENT TO BE 50MM LOWER THAN EXISTING.
 - 05 PROP. CONCRETE WALKWAY PER DETAIL SC4/C-2 C/W CONSTRUCTION JOINTS PER SC5/C-2.
 - 06 TIE-IN TO EXISTING ASPHALT / CONCRETE SIDEWALK / ASPHALT PATH / OR GRANULAR ENTRANCE.
 - 07 OUTLET OF SUBDRAIN.
 - 08 PROPOSED TWSI INSTALLATION PER SC7.3/C-2
 - 09 PROVIDE TACT COAT TO EXISTING ASPHALT JOINT BEFORE NEW ASPHALT PLACEMENT.
 - 10 FIBERBOARD PLACEMENT ADJACENT TO EXISTING BRICK AND PROPOSED CONCRETE WALKWAY.
 - 11 100mm TOPSOIL, SEED AND MULCH RESTORATION OF DISTURBED GRASSED AREAS.
 - 12 REINSTATE GRANULAR STONE DUST WALKING PATH
 - 13 PROPOSED 26.0M SUBDRAIN PER OPSD 206.050 TO OUTLET DITCH 0.5M FROM ASPHALT EDGE.

- REINSTATEMENT LEGEND**
- NEW 50MM HL3 ASPHALT
 - NEW CONCRETE MONOLITHIC SIDEWALK / WALKWAY
 - NEW PATHWAY CULVERT PER DETAIL SC
 - 100mm TOPSOIL, SEED AND MULCH, OR HYDROSEEDING
 - NEW DEPRESSED SIDEWALK ENTRANCE
 - CENTERLINE OF PATHWAY
 - EDGE OF PATHWAY
 - PROPOSED SUBDRAIN

CLIENT LOGO:

KEYPLAN (NTS):

DISCLAIMER NOTES:

- THE CONTRACTOR SHALL BE SOLELY RESPONSIBLE FOR ISSUES/PROBLEMS WHICH MAY OCCUR AS A RESULT OF A FAILURE TO FOLLOW THESE PLANS, SPECIFICATIONS AND THE DESIGN INTENT THEY CONVEY.
- WHERE THERE ARE ALLEGED ERRORS, OMISSIONS, INCONSISTENCIES OR AMBIGUITIES PRESENT IN THE CONTRACT DOCUMENTS, THE CONTRACTOR MUST SEEK CLARIFICATION FROM MCA DEPARTMENT OF INFRASTRUCTURE, HOUSING, AND ENVIRONMENT (DHE). ANY COSTS OR SCHEDULE DELAYS WHICH RESULT AS A FAILURE TO CONTACT DHE FOR CLARIFICATION SHALL BE SOLELY THE RESPONSIBILITY OF THE CONTRACTOR.
- DO NOT SCALE DRAWINGS. REFER ANY DIMENSIONAL CLARIFICATIONS AND/OR POSSIBLE TRADE INTERFERENCE/CONFLICTS TO MCA FOR CLARIFICATION PRIOR TO COMMENCEMENT OF THE WORK.
- THE CONTRACTOR SHALL BE RESPONSIBLE FOR ALL COORDINATION WITH SUBTRADES AND SHALL ADDRESS CONSTRUCTION TEAM COORDINATION ITEMS PRIOR TO ISSUING REQUESTS FOR INFORMATION FROM MCA.
- THE POSITION OF POLE LINES, CONDUITS, WATERMANS, SEWERS AND OTHER UNDERGROUND AND OVERGROUND UTILITIES AND STRUCTURES IS NOT NECESSARILY SHOWN ON THE CONTRACT DRAWINGS AND, WHERE SHOWN, THE ACCURACY OF THE POSITION OF SUCH UTILITIES AND STRUCTURES IS NOT GUARANTEED. BEFORE STARTING WORK, THE CONTRACTOR SHALL INFORM THEMSELVES OF THE EXACT LOCATION OF ALL SUCH UTILITIES AND STRUCTURES, AND SHALL ASSUME ALL LIABILITY FOR DAMAGE TO THEM.

SIDEWALK RESTORATION GENERAL NOTES:

- PROPOSED SIDEWALK SHALL PER DETAIL SC2/C-2. LONGITUDINAL SLOPE NOT TO EXCEED 8%, SIDEWALK CROSS SLOPE NOT TO EXCEED 2%, SIDEWALK TO TIE IN TO EXISTING GROUND NOT TO EXCEED 3%.
- CONTRACTOR TO BE RESPONSIBLE FOR REMOVAL OF ALL CONSTRUCTION DEBRIS FROM SITE.
- CONTRACTOR TO INSTALL FIBERBOARD AT EXPANSION JOINTS, AND AROUND ANY COLUMN STRUCTURES PER DETAIL SC5/C-2.
- CONTRACTOR TO SPRAY CURING PANT AFTER POURING AND SETTING OF THE MONOLITHIC CONCRETE SIDEWALK AND CONCRETE WALKWAYS. CONTRACT TO ALSO PAINT CURB HEIGHT AND 0.15M OF SIDEWALK YELLOW AFTER CURING PANT.
- UTILITY POLES TO BE PROTECTED DURING CONSTRUCTION ACTIVITY ADJACENT TO POLES.
- CONCRETE WALKWAY BRICK TRIM TO BE PROTECTED AND REINSTATED IF DAMAGED DURING REMOVAL OF CONCRETE PANELS.
- CONTRACTOR TO MATCH EXISTING ASPHALT GRADES AT TIE-IN LOCATIONS.

NO.	DATE	BY	DESCRIPTION
02	2025-07-02	DS/LP	ISSUED FOR CONSTRUCTION
02	2025-05-16	DS/LP	ISSUED FOR TENDER
01	2025-03-31	DS/LP	ISSUED FOR INITIAL REVIEW
No.	YYYYMMDD	BY	DESCRIPTION

STAMP:

PROJECT: MCA - AMBE - AHKWESASNE MOHAWK SCHOOL - SIDEWALK REHABILITATION PROJECT
AKWESASNE, ONTARIO

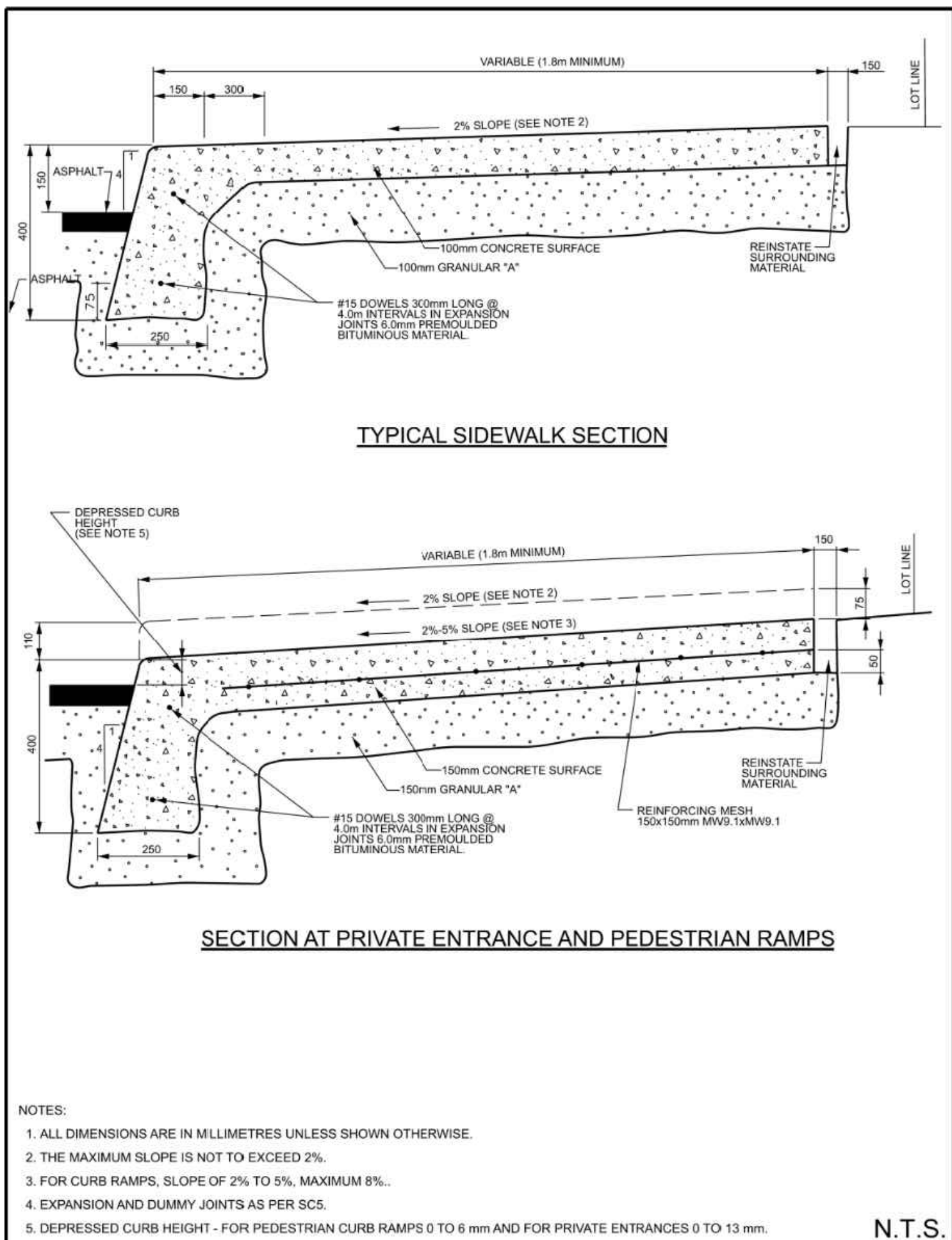
DRAWING: REMOVALS AND REINSTATEMENT PLAN

MOHAWK COUNCIL OF AKWESASNE DEPARTMENT OF INFRASTRUCTURE, HOUSING AND ENVIRONMENT
DHE PROJECT No: 26-1003A

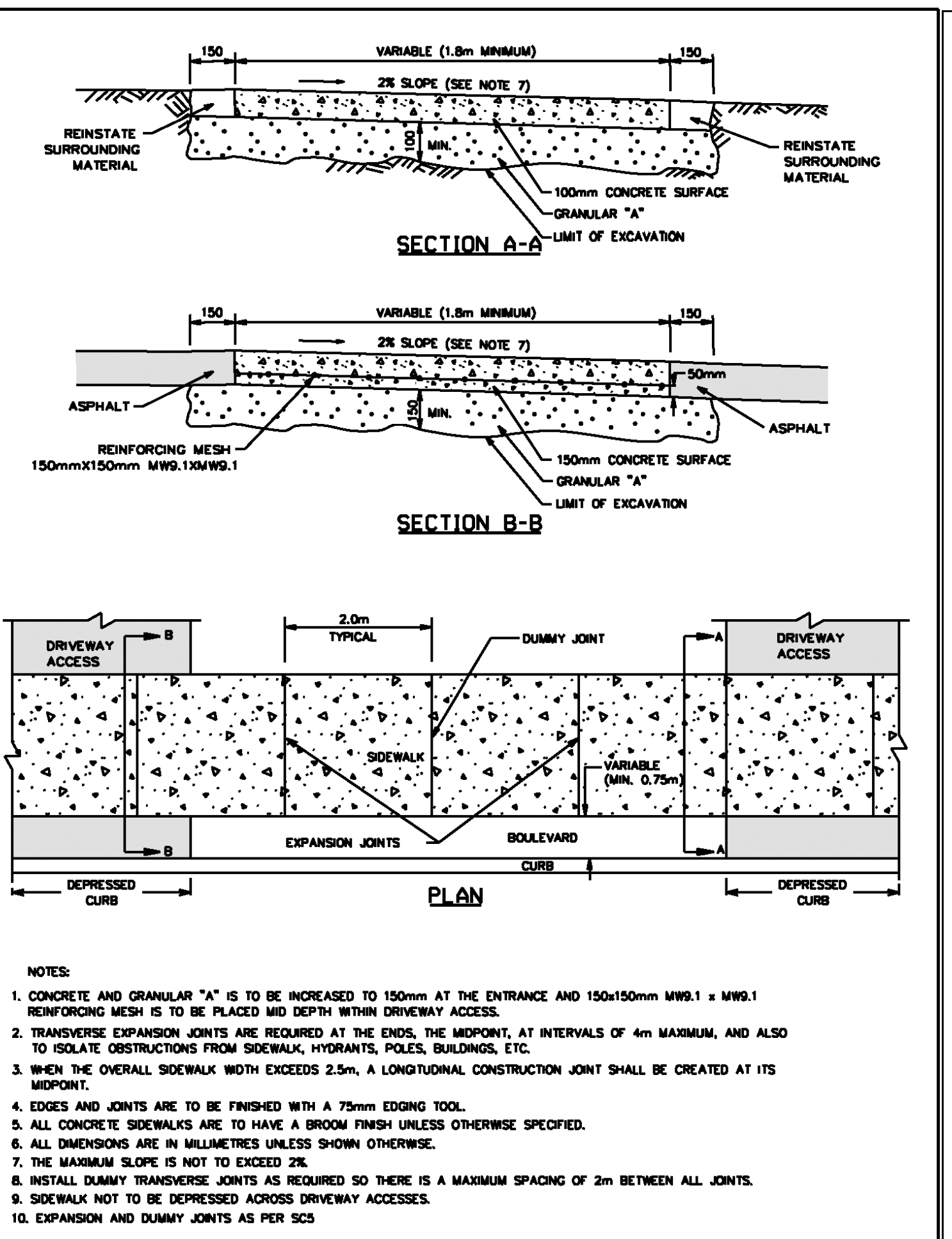
CLIENT No.:
DRAFTED: D.T.S.
DESIGNED: D.T.S.
REVIEWED: L.P.
APPROVED: L.P. / D.T.S.
SHEET #

SCALE: 0m 2 4 6 8 10m
H: 1:250

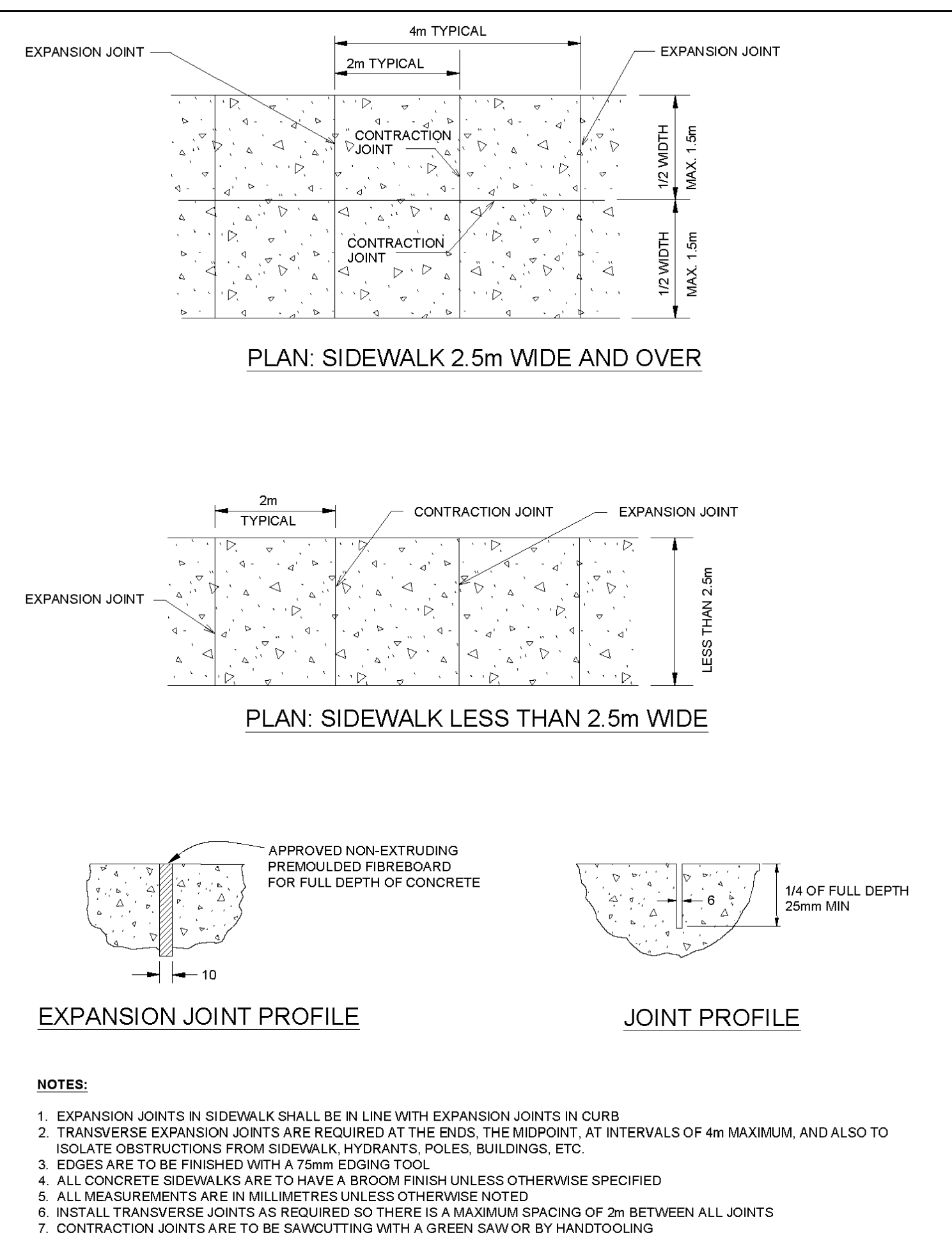
C-1



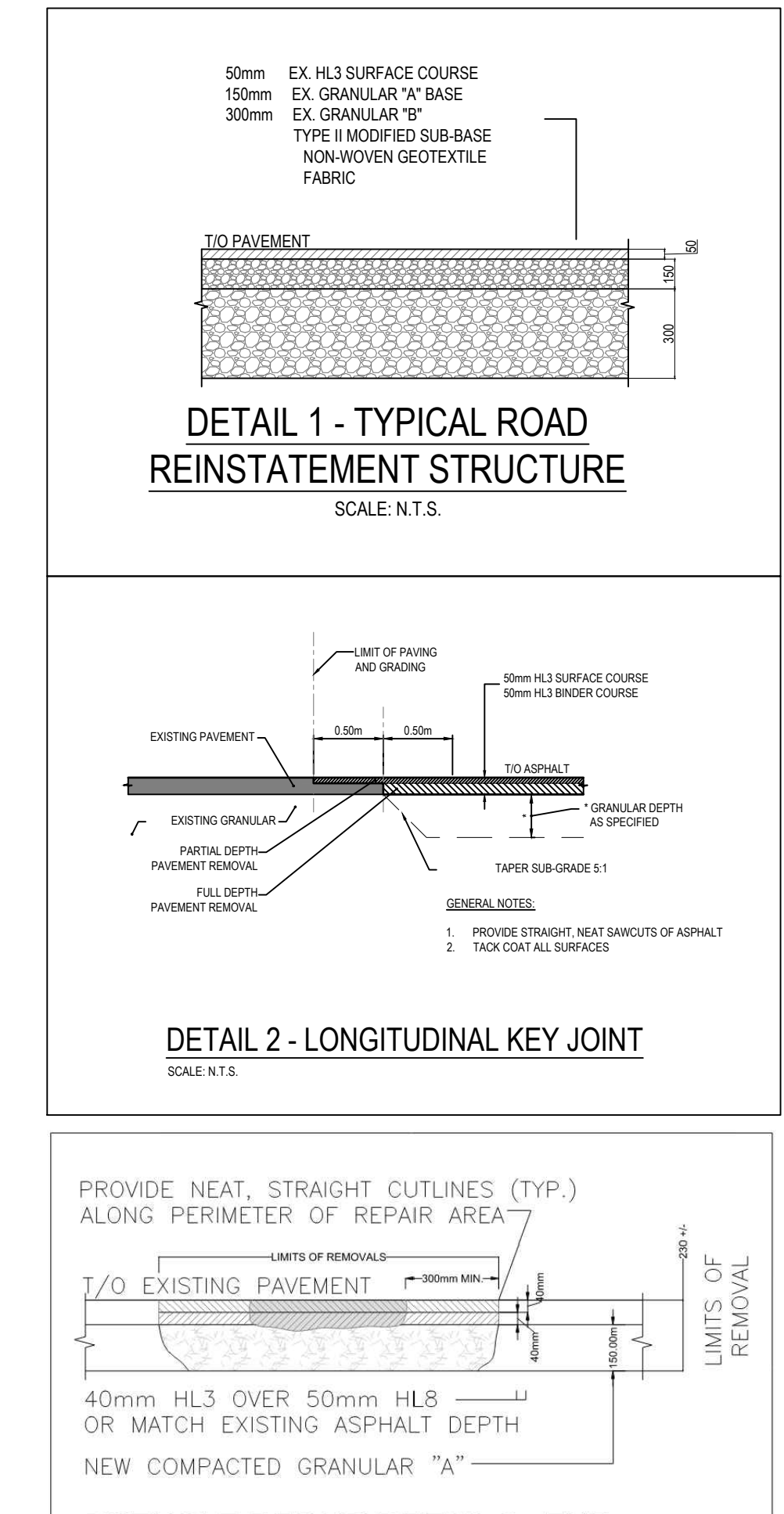
MONOLITHIC CONCRETE CURB AND SIDEWALK	DATE:	MAY 2001
	REV. DATE:	MAY 2021
	DWG. No.:	SC2



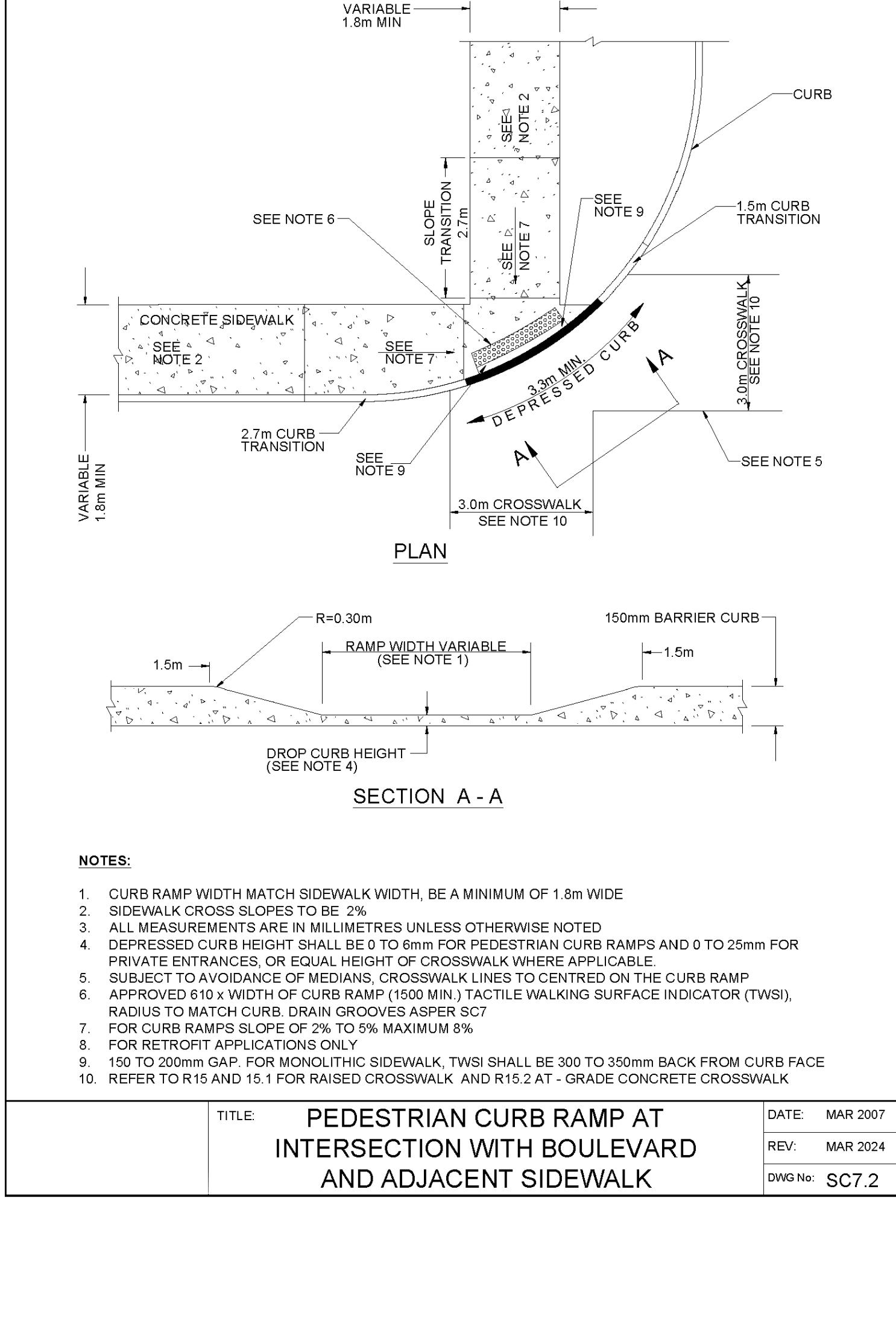
TYPICAL CONCRETE SIDEWALK IN BOULEVARD	DATE:	MAY 2001
	REV. DATE:	MARCH 2018
	DWG. No.:	SC4



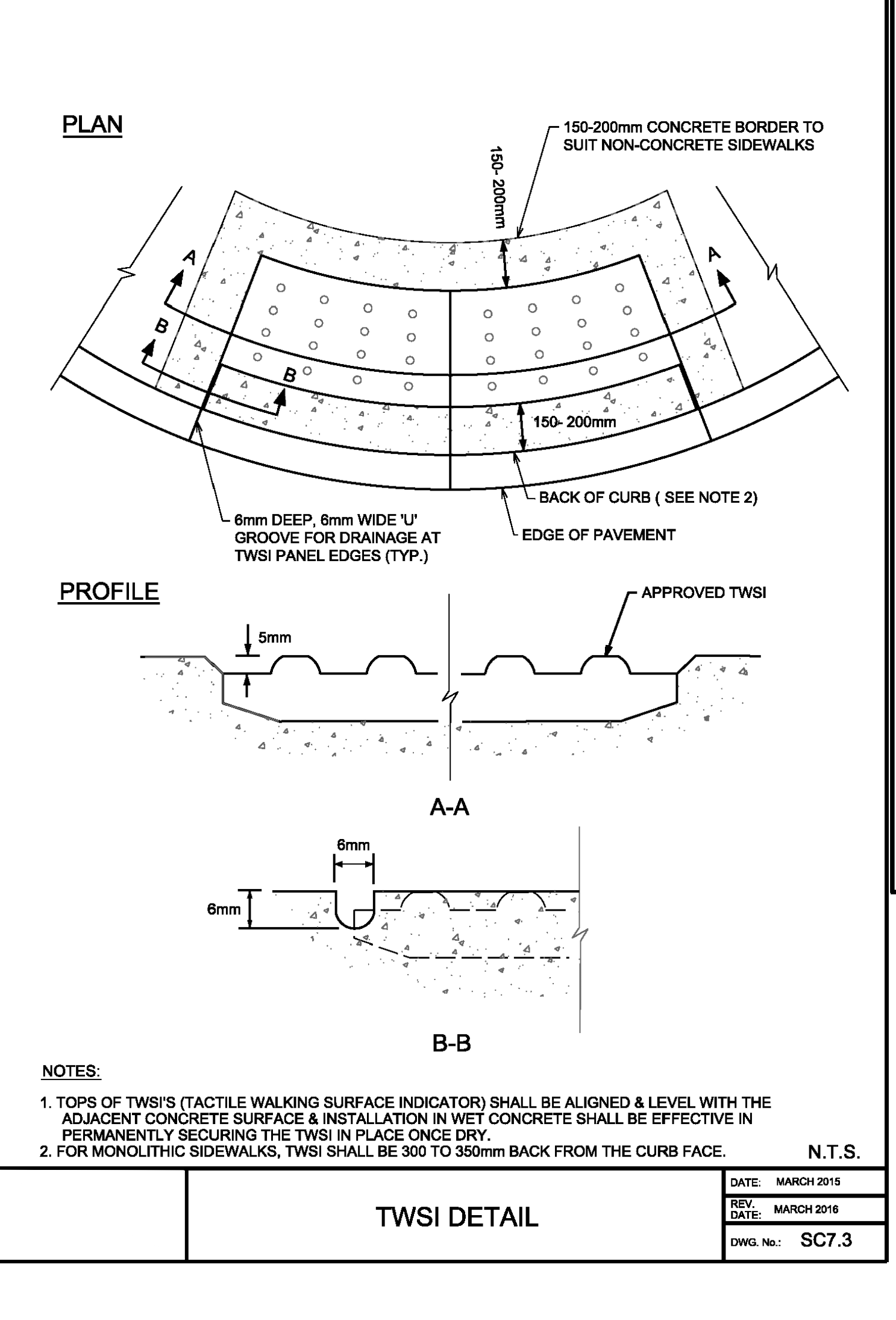
SIDEWALK CONSTRUCTION JOINTS	DATE:	MAY 2001
	REV. DATE:	MAR 2024
	DWG No.:	SC5



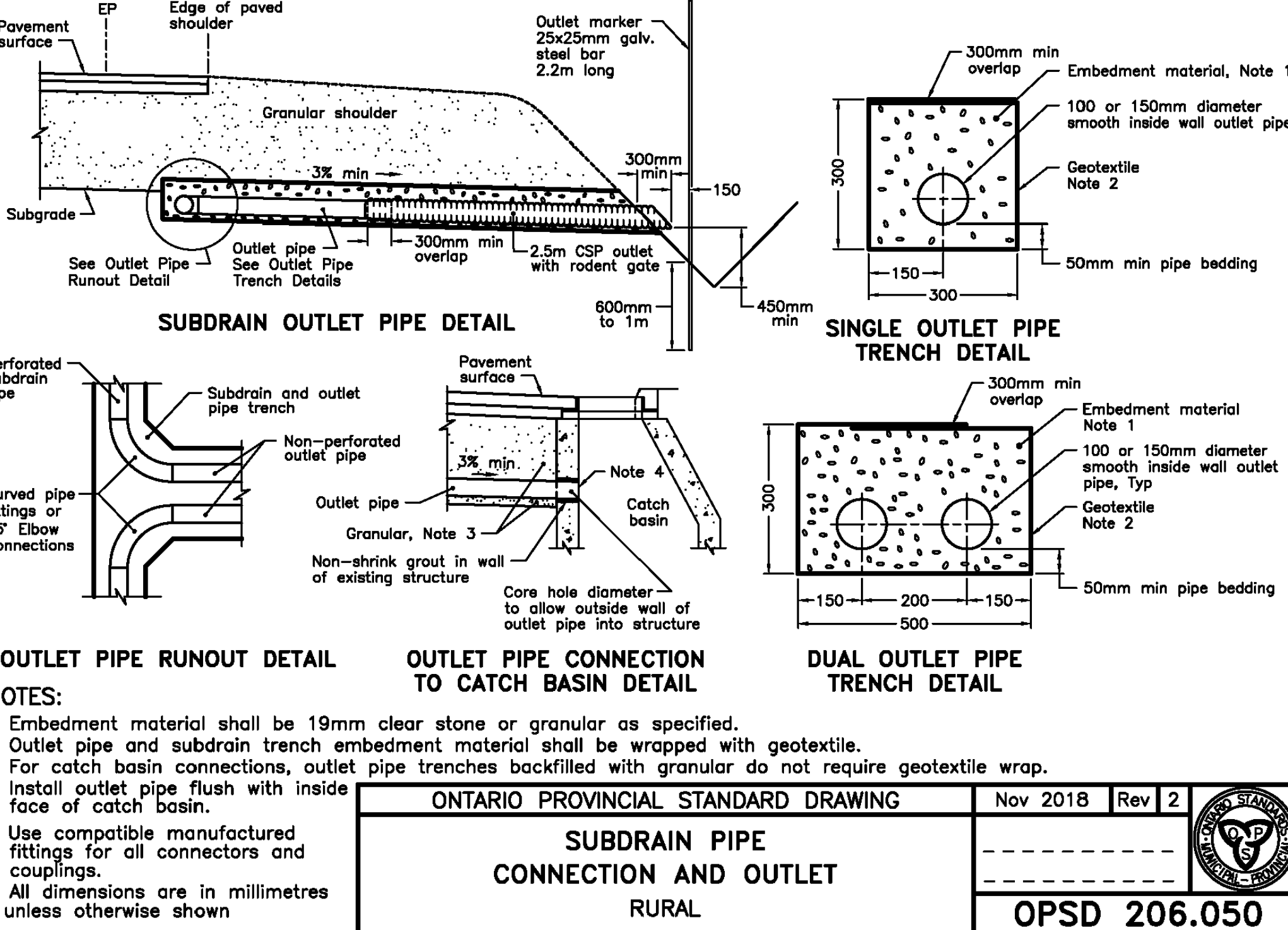
POTHOLE REPAIR DETAIL 3 - TYP.	DATE:	MAY 2001
	REV. DATE:	MAR 2024
	DWG No.:	SC5



PEDESTRIAN CURB RAMP AT INTERSECTION WITH BOULEVARD AND ADJACENT SIDEWALK	DATE:	MAR 2007
	REV. DATE:	MAR 2024
	DWG No.:	SC7.2



TWSI DETAIL	DATE:	MARCH 2015
	REV. DATE:	MARCH 2016
	DWG. No.:	SC7.3



ONTARIO PROVINCIAL STANDARD DRAWING		Nov 2018	Rev 2
SUBDRAIN PIPE CONNECTION AND OUTLET RURAL		OPSD 206.050	

CLIENT LOGO: MOHAWK COUNCIL OF AKWESASNE

KEY PLAN (NTS)

DISCLAIMER NOTES:

1. THE CONTRACTOR SHALL BE SOLELY RESPONSIBLE FOR ISSUES/PROBLEMS WHICH MAY OCCUR AS A RESULT OF A FAILURE TO FOLLOW THESE PLANS, SPECIFICATIONS AND THE DESIGN INTENT THEY CONVEY.
2. WHERE THERE ARE ALLEGED ERRORS, OMISSIONS, INCONSISTENCIES OR AMBIGUITIES PRESENT IN THE CONTRACT DOCUMENTS, THE CONTRACTOR MUST SEEK CLARIFICATION FROM MCA DEPARTMENT OF INFRASTRUCTURE, HOUSING AND ENVIRONMENT (DHE). ANY COSTS OR SCHEDULE DELAYS WHICH RESULT AS A FAILURE TO CONTACT DHE FOR CLARIFICATION SHALL BE SOLELY THE RESPONSIBILITY OF THE CONTRACTOR.
3. DO NOT SCALE DRAWINGS. REFER ANY DIMENSIONAL CLARIFICATIONS AND/OR POSSIBLE TRADE INTERFERENCES/CONFLICTS TO MCA FOR CLARIFICATION PRIOR TO COMMENCEMENT OF THE WORK.
4. THE CONTRACTOR SHALL BE RESPONSIBLE FOR ALL COORDINATION WITH SUBTRADES AND SHALL ADDRESS CONSTRUCTION TEAM COORDINATION ITEMS PRIOR TO ISSUING REQUESTS FOR INFORMATION FROM MCA.
5. THE POSITION OF POLE LINES, CONDITIONS, WATERWAYS, SEWERS AND OTHER UNDERGROUND AND OVERGROUND UTILITIES AND STRUCTURES IS NOT NECESSARILY SHOWN ON THE CONTRACT DRAWINGS AND, WHERE SHOWN, THE ACCURACY OF THE POSITION OF SUCH UTILITIES AND STRUCTURES IS NOT GUARANTEED. BEFORE STARTING WORK, THE CONTRACTOR SHALL INFORM THEMSELVES OF THE EXACT LOCATION OF ALL SUCH UTILITIES AND STRUCTURES, AND SHALL ASSUME ALL LIABILITY FOR DAMAGE TO THEM.

DISCLAIMER NOTES:

1. PROPOSED SIDEWALK SHALL PER DETAIL SC5 ON DWG C-02. LONGITUDINAL SLOPE NOT TO EXCEED 1%, SIDEWALK CROSS SLOPE NOT TO EXCEED 2%, SIDEWALK TO BE IN EXISTING GROUND NOT TO EXCEED 3%.
2. CONTRACTOR TO BE RESPONSIBLE FOR REMOVAL OF ALL CONSTRUCTION DEBRIS FROM SITE.
3. CONTRACTOR TO INSTALL FIBERBOARD AT CONSTRUCTION JOINTS, AND AROUND ANY COLUMN STRUCTURES.
4. CONTRACTOR TO SPRAY CURING PAINT AFTER POURING AND SETTING OF THE MONOLITHIC CONCRETE SIDEWALK AND CONCRETE WALKWAYS.
5. UTILITY POLES TO BE PROTECTED DURING CONSTRUCTION ACTIVITY ADJACENT TO POLES.
6. WALKING PATH TO INCLUDE 0.2m REMOVAL OF EXISTING GRASS AND REPLACE WITH 100mm STONE DUST AND 100mm GRANULAR NON-WOVEN GEOTEXTILE FABRIC. GRANULAR IS TO BE USED IN AREAS OF SOFT SOIL, OR ADDED TO HELP RAISE PATH OUT OF LOW LYING AREAS.

PROVIDE NEAT, STRAIGHT CUTLINES (TYP.) ALONG PERIMETER OF REPAIR AREA.

40mm HL3 OVER 50mm HL8 OR MATCH EXISTING ASPHALT DEPTH
NEW COMPACTED GRANULAR "A"

NO. 02 2025-07-02 DS/LP ISSUED FOR CONSTRUCTION

NO. 02 2025-05-16 DS/LP ISSUED FOR TENDER

NO. 01 2025-03-31 DS/LP ISSUED FOR INITIAL REVIEW

NO. YYYYY-AMM-DO BY DESCRIPTION

STAMP: DARYL THOMAS SEYMOUR 100210452 May 20, 2026 PROVINCE OF ONTARIO

PROJECT: MCA - AMBE - AHKWESASNE MOHAWK SCHOOL - SIDEWALK REHABILITATION PROJECT

AKWESASNE, ONTARIO

FRONT: TYPICAL SECTIONS AND DETAILS

MOHAWK COUNCIL OF AKWESASNE DEPARTMENT OF INFRASTRUCTURE, HOUSING AND ENVIRONMENT

DHE PROJECT No: 26-1003A

CLIENT No.:

DRAFTED: D.T.S.

DESIGNED: D.T.S.

REVIEWED: L.P.

APPROVED: L.P. / D.T.S.

SHEET #

SCALE: 0m 2 4 6 8 10m H=1:250

C-2