

MOHAWK COUNCIL OF AKWESASNE
KAWEHNOKE DISTRICT

25-7940 PEACE TREE MALL
NEW FAÇADE PROJECT

ADDENDUM NO. 2

Consisting of 1 Page

1. RFQ closing date has been extended by a week, to close on July 7th, 2026, at 2:00pm. The deadline for questions is also extended to July 2nd, 2026, at 4:00pm.
2. Please find the architect's renderings for this project. Note that the scope of work is outlined in the structural drawings and in the tender documents. Notation on the renderings are outdated.

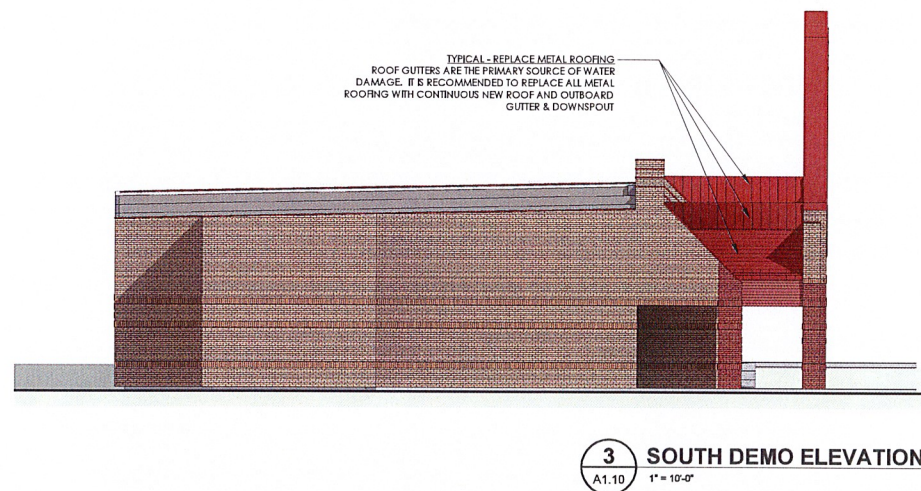
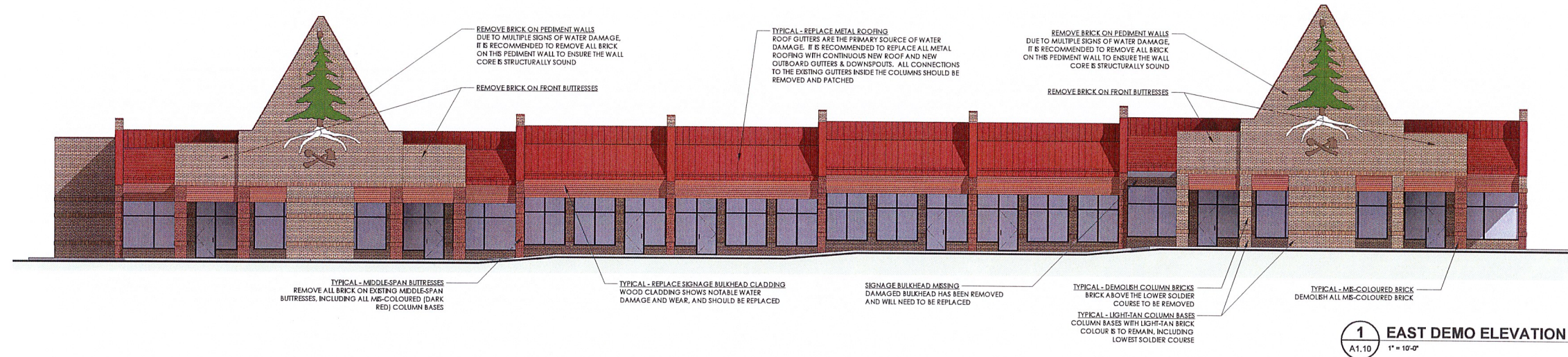
I have read Addendum No. 2 and have included it in my Bid.

Consultant Signature

Date

-- END OF ADDENDUM NO. 2 --

Monday, June 29, 2026



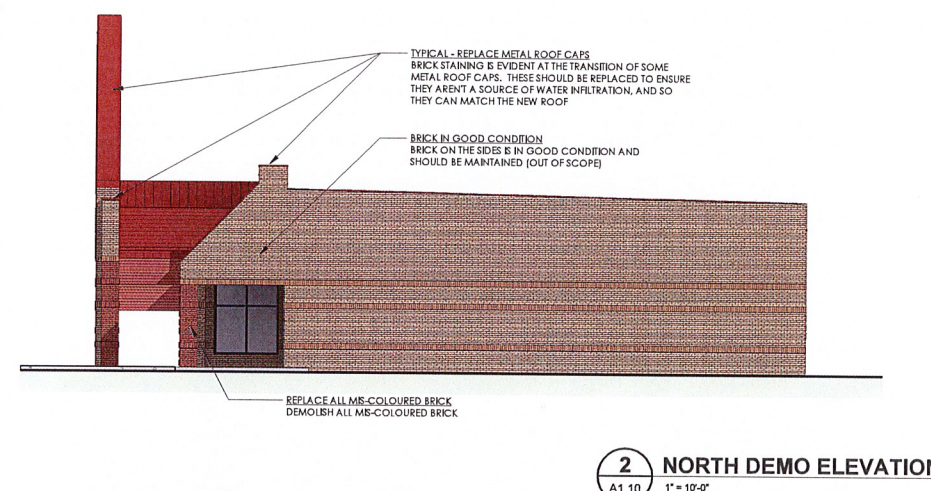
NOTES ON THE INTERVENTION STRATEGY

1. REMOVING AND REPLACING THE STEEL ROOF, GUTTER & DOWNSPOUTS, AND METAL CAP FLASHING IS EXPECTED TO CORRECT THE CAUSE OF ALL THE BUILDING'S CURRENT DETERIORATION PROBLEMS (WATER DAMAGE).
2. TO AVOID THE COMPLEXITY OF WORKING WITH THE EXISTING BRICK, THE OPTION INVOLVES REMOVING ALL BRICK ON THE EXISTING OUTER FRONT FACADE AND MID-SPAN BUTTRESSES. FOR DURABILITY, IT IS PROPOSED TO LEAVE THE BRICK AT THE BASE OF THE COLUMNS THAT ARE CURRENTLY THE EXISTING LIGHT-TAN COLOUR. ALL EXISTING DARK RED BRICK TO BE DEMOLISHED.
3. THE BRICK AROUND THE SIDES AND REAR OF THE BUILDING IS NOT IN THE SCOPE FOR THIS PROJECT, AND THE BRICK ON THE FRONT FACADE (ALIGNED WITH THE STOREFRONTS) IS IN GOOD CONDITION.
4. TO TIE THE EXISTING SIDES IN WITH THE NEW FACADE, IT IS PROPOSED TO LEAVE (OR REBUILD) THE LOWER SOLDIER COURSE BRICK AS THE CONTINUOUS DATUM LINE BETWEEN THE NEW AND EXISTING CLADDING AREAS.

SUMMARY OF DEMOLITION SCOPE

THE PRIMARY OBJECTIVE OF THIS OPTION IS TO PROVIDE A COMPREHENSIVE REFRESH OF THE FRONT FACADE WITH NEW DURABLE CLADDING MATERIALS WITH HIGH RESISTANCE TO MOISTURE DAMAGE. THE DEMOLITION TO ACCOMMODATE THIS INCLUDES:

1. REMOVE AND REPLACE STEEL ROOF AND ASSOCIATED GUTTER & DOWNSPOUTS.
2. REMOVE AND REPLACE WOOD SIGNAGE BULKHEAD CLADDING. THIS IS IN POOR CONDITION.
3. CAREFULLY REMOVE THE TWO (2) LARGE SCULPTED WOOD LOGOS FROM THE PEDIMENT FACADES.
4. REMOVE ALL BRICK ON THE OUTER FRONT FACADE AND MIDDLE-SECTION BUTTRESSES, WHILE LEAVING THE BASE BRICK ON COLUMN SECTIONS WITH LIGHT-TAN BRICK. FOR BRICK SECTIONS TO REMAIN, REMOVE AND REPLACE DAMAGED BRICKS. ALL OTHER BRICK CLADDING IS TO BE RETAINED AND REPOINTED WHERE NECESSARY.



ISSUED FOR
1 2025-08-15 DESIGN CONCEPT DRAFT

IMPERIAL
THIS DRAWING IS COPYRIGHTED AND MUST NOT BE USED, REPRODUCED, OR REVISED WITHOUT WRITTEN PERMISSION.
DIMENSIONS ARE IN FEET & INCHES UNLESS OTHERWISE NOTED. VERIFY DIMENSIONS. DO NOT SCALE THIS DRAWING.

REPORT INCONSISTENCIES AND OMISSIONS TO THE CONSULTANT FOR CLARIFICATION BEFORE COMMENCING WITH THE WORK.
DEVIATIONS FROM THE CONTRACT DOCUMENTS WITHOUT WRITTEN APPROVAL FROM THE CONSULTANT ARE SUBJECT TO CORRECTION AT THE CONTRACTOR'S EXPENSE.

ARCHITECT & PRIME CONSULTANT
GRAFF ARCHITECTURE
1358 RIDEAU FERRY ROAD
PERTH, ONTARIO K7H 3C7
Tel: (613) 900-1963

KEYPLAN

SEAL

PEACE TREE MALL FACADE RENOVATION

167 AKWESASNE INTERNATIONAL ROAD
CORNWALL ISLAND, ONTARIO

DESIGN ELEVATIONS - OPTION 2

DRAWN: GJG
PLOT DATE: 2025-08-15 12:31:20 PM

A4.00

25014P01



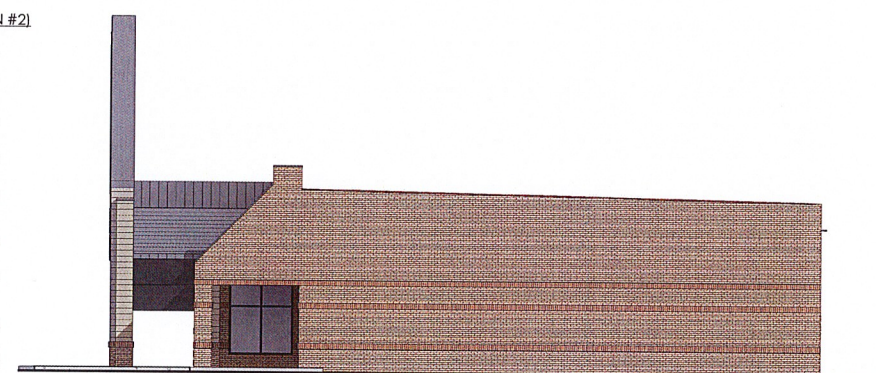
1 EAST DESIGN ELEVATION
A4.00 1" = 10'-0"

NOTES ON RENOVATION STRATEGY (OPTION #2)

1. TO TRANSFORM THE AESTHETICS OF THE FRONT FACADE, IT IS PROPOSED THAT THE NEW METAL ROOF TO BE A MID-TONE GREY COLOUR. THIS WORKS VERY WELL WITH THE EXISTING BRICK COLOUR AND HAS A MORE CONTEMPORARY LOOK.
2. PROVIDE NEW HIGH-GAUGE METAL CLADDING FOR THE SIGNAGE BULKHEADS. PROVIDE NEW BULKHEAD FOR MISSING SECTION.
3. REMOVE ALL BRICK ON THE FRONT FACADE (AND ALL FRONT COLUMNS & BUTTRESSES), AND REPLACE WITH NEW HIGH-GAUGE METAL CLADDING.
4. BRICK AT THE BASE OF THE COLUMNS THAT CURRENTLY HAVE LIGHT-TAN BRICK COLOUR IS TO REMAIN AS SHOWN UP TO THE LOWEST SOLDIER COURSE OF BRICK. THIS DATUM LINE OF BRICK WILL LINIFY THE NEW FRONT FACADE AND EXISTING BRICK CLADDING TO REMAIN.
5. FOR THE EXISTING BASE-OF-COLUMNS WITH THE DARKER RED BRICK, THOSE BRICK SECTIONS WILL BE DEMOLISHED AND REPLACED WITH NEW BRICK TO MATCH THE LIGHT-TAN BRICK.
 - A. ALTERNATIVELY, THE DARK RED BRICK ON THE BASE-OF-COLUMNS COULD REMAIN AND BE PAINTED TO MATCH THE EXISTING BRICK, THOUGH AESTHETICALLY THIS IS NOT ADVISED SINCE THE AREA OF PAINTED BRICK WILL BE SO SMALL RELATIVE TO UNPAINTED BRICK.
6. A NEW SIGNATURE MATERIAL CAN BE USED FOR THE FRONT PEDIMENTS, SUCH AS A HIGH-GRADE STEEL WITH HORIZONTAL SHADOW LINES. FURTHER DISCUSSION IS REQUIRED TO FINALISE COLOURS, BUT THE INITIAL THOUGHT IS FOR A NEUTRAL, LIGHTER COLOUR TO PROVIDE CONTRAST WITH THE ROOF AND BRICK.



3 SOUTH DESIGN ELEVATION
A4.00 1" = 10'-0"



2 NORTH DESIGN ELEVATION
A4.00 1" = 10'-0"

